



DELIVERING THE PERFECT PLOTS



Nisarga
Homes
Escape to nature's hideout

ಕೆ ಸ್ಕೇರ್
ಕವ

South Bangalore's

only plotted development with

Resort-living experience

3 Lakhs+ trees around the project

📍 Chikkanahalli, Bidadi





Your Daily Dose of Oxygen

In the heart of nature's embrace, Nisarga Homes invites you to experience a life where every breath is a celebration of vitality.

Enveloped by 3 lakh+ trees and plants with an additional 12 plants per plot, our Nisarga property, which is located near Manchanabele dam, ensures its residences oxygen-rich pure air, all while surrounded by an abundance of nature, making life healthier, happier, and adding quality to your life with each breath.

Nisarga Homes

Escape to Nature's hideout

(Just 15 minutes from Bangalore - Mysore Expressway through Hejjala)

It's more than a plot...



It's your convertible
farmland



It's your **weekend
getaway**



It's your peaceful
**workation
spot**



It's your
vacation home









It's an asset to your
next-gen



It's a gift to contented
retired life

Today it's not about "Which Place you live"
It's more about "Which Community you live in"

True wealth lies not in the expenditure but in the richness of how you live

-  **Nature-Themed Park** | Upcoming government approved Amusement-park for your endless fun-filled adventures
-  **Manchenabele dam** | So close to the dam, it could be your everyday hang out spot
-  **Farming** | Eat self-grown fruits and vegetables. We already have 12 plants/plot for you
-  **The country life** | Get your group together to experience rural life at our cottages
-  **Tiny treks** | Beat boredom with quick trek trips on the hills around your home
-  **Natural living** | Experience the beauty of sunrise, sunset, nature, and lots of greenery all around
-  **Eco-hero** | Give back to nature with gardening, feeding birds, animals and more
-  **The balanced life** | Belong to nature and yet not so far away from the buzz of the city



The world of 30+ amenities

Imagine a community where every need and every desire is met right at your doorstep. Yes, we offer an entire lifestyle, complete with over 65+ world-class amenities designed to elevate your living experience



CRICKET PITCH



SWIMMING
POOL



RESTAURANT



RAIN DANCE



COTTAGES



ZIPLINE



BEACH
VOLLEYBALL



CARROM



SNOOKER
TABLE



CHESS



TABLE TENNIS



CAMPFIRE



DARTS



CHIT CHAT
ZONE



LOOP
WALKING



ORGANIC
FOREST



CLAY POTTERY



CYCLING
TRACK



SENSORY
GARDEN



CARGO NET
TRAVERSING



THERAPEUTIC
WALKWAY



BUTTERFLY
GARDEN



CAMPING SITE



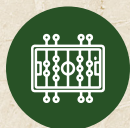
PAINTING
PLAZA



HORIZONTAL
LADDER



SAND PIT



FOOSBALL



MEDITATION
AREA



KID'S PLAY
AREA



GAUNTLET

We're not just boasting. It's happening for real.

The 'twin city' transport corridor to speed up real estate development

Leena Muddidri / TNN / Mar 31, 2023, 07:46 IST

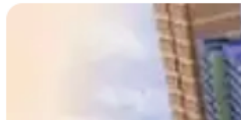
74 PTS SHARE AA FOLLOW US

You're Reading



The 'twin city' transport corridor to speed up real estate development

Recently, a stunning video of the Vande Bharat Chennai-Mysuru train zipping under the brand-new 10-lane Bengaluru-Mysuru Expressway went viral. And while both are landmark transport and infrastructure projects, the expressway is an am ... [Read More](#)



Bengaluru-Mysuru expressway project pushes up land prices

The newly-built Bengaluru-Mysuru Expressway has pushed up land prices along its stretches in villages and towns and even the rental values have gone up especially in towns like Ramanagara and Channarayana

December 11, 2022 07:12 pm | Updated 07:13 pm IST - Bengaluru



DARSHAN DEVAIAH B.P.

COMMENTS SHARE



Bengaluru-Mysuru expressway could become Karnataka's first high-tech industry corridor, experts say

The expressway is expected to boost investment in high-tech industrial development in areas that it passes through.

SOUPTIK DATTA | MARCH 14, 2023 / 12:58 PM IST



Wait ends as Bidadi Smart City project is set to take wing

Rohith B R / TNN / Nov 18, 2016, 05:48 IST

SHARE AA FOLLOW US

You're Reading



Wait ends as Bidadi Smart City project is set to take wing



The much-awaited Bidadi Smart City project -touted to be Bengaluru's own Gurugram -will soon be a reality.



ಸಂಚಾರದ ಒತ್ತಡ ನಿರ್ಮಿಸುವುದೇ ಹೊಸ ರಸ್ತೆ ಜಾಲ?

ಅಂದಾಜು	ಉಪನಗರ ಪ್ರಗತಿಪೂರ್ಣ ರಸ್ತೆಗಳು
₹1,400 ಕೋಟಿ	ಕೋಟರ-ಸುರೇಷ್ ಭಾಗ-4 ರೂ. 100 ಕೋಟಿ
	ಸುರೇಷ್ ಭಾಗ-2 ರೂ. 100 ಕೋಟಿ
	ಬಿ.ಎಂ.ಎಲ್. ರಸ್ತೆಗಳು ರೂ. 1,000 ಕೋಟಿ
	ಇತರ ರಸ್ತೆಗಳು ರೂ. 200 ಕೋಟಿ

158 ಕಿ.ಮೀ. ಉದ್ದದ ಅಗಲವು 15.9 ಮೀ. ಆಗಿರುತ್ತದೆ.

156.11 ಕಿ.ಮೀ. ಉದ್ದದ ಅಗಲವು 15.9 ಮೀ. ಆಗಿರುತ್ತದೆ.

Amusement park planned near city

Anil.Geji@timesgroup.com

Bengaluru: Residents of the tech cap could soon have a new tourist destination closer home as the state government plan set up an amusement park near Manchanabele Dam in Ramanagara district.

The irrigation department has proposed to develop the land close to the pictures dam, which is about 37km from Bengaluru as a tourism hub on a public private partnership model. "We have earmarked Rs 150 crore to develop the new amusement park as part of the government's plans to develop Ramanagara district as a tourism hub," said deputy chief minister CN Ashwath Narayan, who is also in charge of the district. "If developed, it will become a major tourist place in the region and since it will be close to Bengaluru, it will become a popular destination."

₹144.69 ಕೋಟಿ ಯೋಜನೆಗೆ ಸರ್ಕಾರ ಗ್ರೀನ್ ಸಿಗ್ನಲ್ | ಪಿಪಿಪಿ ಮಾದರಿಯಲ್ಲಿ ನಿರ್ಮಾಣ ಮಂಚನಬೆಲೆ ಪ್ರವಾಸೋದ್ಯಮಕ್ಕೆ ಆಸ್ಪು

ಬೆಂಗಳೂರಿನ ಸುತ್ತಮುತ್ತಲಿನ ರಸ್ತೆಗಳ ಸುಧಾರಣೆ ಮತ್ತು ನಿರ್ಮಾಣದ ಅಗತ್ಯತೆಯನ್ನು ಗುರುತಿಸಿ, ಸರ್ಕಾರವು ಇದೀಗ ಒಂದಾದ ಮಂಚನಬೆಲೆಯಲ್ಲಿ ಉಳಿತಾಯ ಮಾಡುವಂತಹ ಯೋಜನೆಗೆ ಸರ್ಕಾರದ ಅನುಮೋದನೆ ನೀಡಿದೆ. ಈ ಯೋಜನೆಗೆ 144.69 ಕೋಟಿ ರೂ. ಮೊತ್ತದ ಯೋಜನೆಗೆ ಸರ್ಕಾರ ಅನುಮೋದನೆ ನೀಡಿದೆ. ಈ ಯೋಜನೆಯ ಮೂಲಕ ಮಂಚನಬೆಲೆ ಬಳಿ 2700 ರೂ. ಜಲಸಂಪನ್ಮೂಲ ಇಲಾಖೆ ವಿಶೇಷ ತಂತ್ರಜ್ಞಾನಿ ಅಧೀನ ಕೆಲಸ ಮಾಡಿದೆ.

ಮಂಚನಬೆಲೆ ಬಳಿ 72 ಎಕರೆ ಪ್ರದೇಶದಲ್ಲಿ ರಾಜ್ಯದ ಮಹತ್ವದ ಉದ್ಯಮಗಳು ಮತ್ತು ಉದ್ಯೋಗ ಕ್ಷೇತ್ರಗಳಿಗೆ ಸಹಾಯ ಮಾಡುವಂತಹ ಯೋಜನೆಗೆ ಸರ್ಕಾರ ಅನುಮೋದನೆ ನೀಡಿದೆ. ಈ ಯೋಜನೆಯ ಮೂಲಕ ಮಂಚನಬೆಲೆ ಬಳಿ 2700 ರೂ. ಜಲಸಂಪನ್ಮೂಲ ಇಲಾಖೆ ವಿಶೇಷ ತಂತ್ರಜ್ಞಾನಿ ಅಧೀನ ಕೆಲಸ ಮಾಡಿದೆ.

ಮಂಚನಬೆಲೆ ಬಳಿ 72 ಎಕರೆ ಪ್ರದೇಶದಲ್ಲಿ ರಾಜ್ಯದ ಮಹತ್ವದ ಉದ್ಯಮಗಳು ಮತ್ತು ಉದ್ಯೋಗ ಕ್ಷೇತ್ರಗಳಿಗೆ ಸಹಾಯ ಮಾಡುವಂತಹ ಯೋಜನೆಗೆ ಸರ್ಕಾರ ಅನುಮೋದನೆ ನೀಡಿದೆ. ಈ ಯೋಜನೆಯ ಮೂಲಕ ಮಂಚನಬೆಲೆ ಬಳಿ 2700 ರೂ. ಜಲಸಂಪನ್ಮೂಲ ಇಲಾಖೆ ವಿಶೇಷ ತಂತ್ರಜ್ಞಾನಿ ಅಧೀನ ಕೆಲಸ ಮಾಡಿದೆ.



ಏನೇನು ಇರಲಿವೆ?

- ### ಪ್ರಮುಖ ಅಂಶಗಳು
- ಅರ್ಕಾವತಿ ನದಿಗೆ ಅಧಿಕಾರಿ ನಿರ್ಮಾಣ ಮಾಡಿರುವ ಜಲಾಶಯ
 - 1.20 ಟಿಎಂಸಿ ನೀರಿನ ಸಂಗ್ರಹಣಾ ಸಾಮರ್ಥ್ಯ
 - 6012.17 ಎಕರೆ ಅಭಿವೃದ್ಧಿ ಪ್ರದೇಶ ತುಂಬಿದೆ
 - ಬೆಂಗಳೂರಿಗೆ ತತ್ಪರಿಧಿಯೇ ತುಂಬುವ ಜಲಾಶಯ
 - ಸ್ವಂತದ ಹಾಗೂ ವಾಣಿಜ್ಯ ಸಾಧನಗಳ ಪ್ರವಾಸಿಗರ ಭೇಟಿ

ನಿರ್ಮಾಣವಾಗಲಿದೆ ಗ್ರೇಟರ್ ಬೆಂಗಳೂರು ರಾಜಧಾನಿಯ ಒತ್ತಡ ನಿವಾರಣೆಗೆ ಪರ್ಯಾಯ ನಗರ | ಮಾಸ್ಕರ್ ಪ್ಲಾನ್ ಸಿದ್ಧಪಡಿಸಲು ಟೆಂಡರ್

ನಿರ್ಮಾಣವಾಗಲಿದೆ ಗ್ರೇಟರ್ ಬೆಂಗಳೂರು ರಾಜಧಾನಿಯ ಒತ್ತಡ ನಿವಾರಣೆಗೆ ಪರ್ಯಾಯ ನಗರ | ಮಾಸ್ಕರ್ ಪ್ಲಾನ್ ಸಿದ್ಧಪಡಿಸಲು ಟೆಂಡರ್

8ಕ್ಕೆ ಸರ್ಕಾರಿ ನೌಕರರ ಧರಣಿ

ಮೈಸೂರಿನಲ್ಲಿ 8ಕ್ಕೆ ಸರ್ಕಾರಿ ನೌಕರರ ಸಂಘಟನೆಗಳು ಭಾಗ

ಆಜಿಮ್ ಪ್ರೆಮ್ಜಿ ಫೌಂಡೇಷನ್

2018-2019

Know Your Neighbourhood

PROXIMITY

(From Nisarga Homes)

- * Ramohalli (20 min)
- * Rajarajeshwari Dental college (25 min)
- * Kempegowda Layout (30 min)
- * Tavrekere (28 min)

MAIN TERMINALS & CONNECTING HUB

- * Mysore main road (17 min)
- * Vidhanasoudha (1hr 10 min)
- * Kumbalgudu (20 min)
- * Kengeri Satellite Bus Stand (27 min)
- * Metro stop Rajarajeshwari Medical College (30 min)
- * Rajarajeshwari Nagar Gate (47 min)
- * Kempegowda Bus terminal (1hr 02 min)
- * City Railway Station (1hr 07 min)

GOVERNMENT ORGANISATIONS & PRIVATE SECTORS

- * ISRO Research Network. (10 min)
- * Ramohalli Industrial Area. (20 min)

EDUCATIONAL INSTITUTIONS

- * Don Bosco College of Engineering. (20 min)
- * V.R. International School. (20 min)
- * L.N.R Public School. (20 min)
- * Shubham Karoti Gurukula. (15 min)
- * ACS College of Engineering. (35 min)
- * Rajarajeshwari Dental College. (25 min)
- * Christ College. (23 min)
- * Swaminarayan Gurukul. (21 min)

NEIGHBORHOOD, LEISURES & ATTRACTIVE DESTINATIONS

- * Big Banyan Tree. (16 min)
- * Mukthinaga Temple. (20 min)
- * Sri Srinivasa Saligrama Temple. (25 min)
- * G.V. Iyer Studios. (19 min)
- * Datta Mandira. (22 min)
- * Rupis Resort. (10 min)
- * Manchanabele Dam. (08 min)
- * Country Club. (20 min)
- * Wonderla Amusement Park. (15 min)

Our Projects

Ongoing



Chikkanahalli Nisarga Homes

Upcoming



Ganakallu Village
Coming Soon



Lakshmisagara Village
Coming Soon

Completed



Attur Layout Yelahanka
Layout 1



Attur Layout Yelahanka
Layout 2



Nirmaan Park View
Ullal, Bangalore



S S Ghati
Doddaballapura



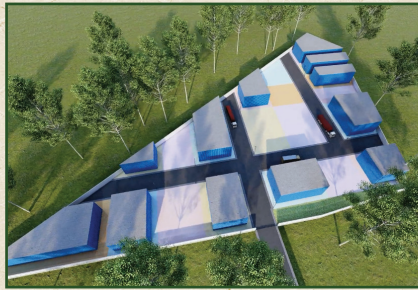
Rajarajeshwari
Residency (RR5)
Ullalu Village



Nandan Enclave
Billakempanahalli



Sri Gokula Residency
Ganapathihalli



Industrial Layout
Kumbalagudu



Sondekuppa Road
Mallapura Cross

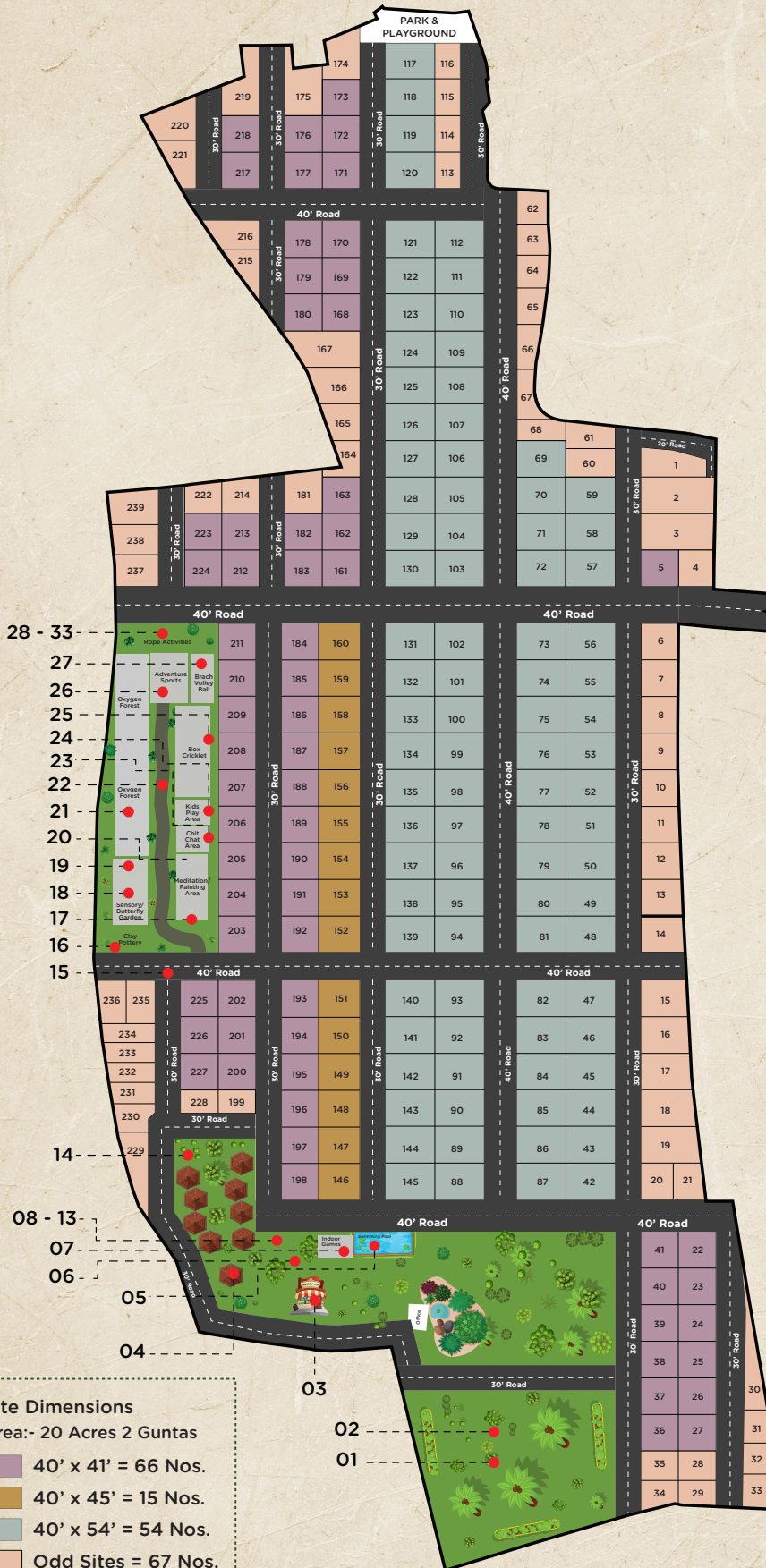
Actual site shots



Yearning to
stay away
from the
city without
feeling
isolated?

Pick a peaceful retreat nestled
amidst nature, yet conveniently
connected to nearby hot spots.

Master Plan



Amenities

1. Wedding/Event Venue
2. Camping Site
3. Restaurant
4. Cottages - Yurts
5. Swimming Pool
6. Campfire/Bonfire
7. Rain Dance
8. Carrom Board
9. Chess
10. Snooker Table
11. Table Tennis
12. Dart Board
13. Foosball
14. Zip Line
15. Cycling Track
16. Clay Pottery
17. Painting Plaza
18. Sensory Garden
19. Butterfly Garden
20. Meditation Forest
21. Organic Forest
22. Therapeutic Walkway
23. Chit Chat Area
24. Kids Play Area
25. Cricket Pitch/ Box Cricket
26. Archery
27. Beach Volleyball
28. Horizontal Ladder
29. Logs Wing
30. Barrel Traversing
31. Loop Walking
32. Gauntlet
33. Cargo Net Traversing



Savanadurga Trek

Manchabele dam



Kp Market



Bengaluru

Gopalan Arcade Mall



PES University



Nisarga Homes
Escape to nature's hideout

Kengeri

Challagatta

Kumbalgodu

Hejjala

GR International Public School



Bidadi

Vajarahalli

Bengaluru to Mysore Expressway

WONDERLA
Bangalore Amusement Park

Eagleton the Golf Resort



Nelligudde Lake



Map not to scale

Journey

The Rooted Plotted Developers

Before STP (Sri Tirumala Properties) happened, our two visionary leaders -Krishnamurthy & Subramani, explored various domains, including real estate. They defied convention, selling sites on their own without a conventional "brand" to rely on.

They became the brand, embodying the values of trust and understanding that resonated with the middle-class aspirations. Combined together they have handled 3600+ successful plot sales (Before and after STP).

The mission was clear....

To provide litigation-free plots at realistic prices. Challenges were inevitable, but determination to deliver value to clients never wavered.

Today, the hearts swell with pride as we witness the joy of families living in the homes constructed on those very plots. And we understand, our success lies not in numbers alone, but in the human connections we forge.

The emergence of Sri Thirumala Projects (now K SQUARE)

2013 was the year when the brand took its first steps. Our founders came together to structure operations and offer services in a way that would better serve the people.

Though we were just starting, our dreams and ambitions were boundless. Today, with a robust land bank and experience we're ready to scale new heights...



Today The World Is Not About "How Much You Spend"
it Is All About "How Rich You Live"

Make the Right Move

Leave behind the urban chaos, breathe in the serenity,
and embrace a life where nature takes care of your well-being.

3600+
Happy
Customers

10+ Year
of Real Estate
Excellence

100+ Acres
of land bank

100s
of families

Corporate Office

No.312, Sayari Complex, 1st Floor, 7th Block,
Outer Ringroad, Near Ravi Gym, Nagarabhavi
2nd stage, Bangalore-560072

To Know More, call **8546 8546 99 / 080 23211199**
Mail us at srithirumalaprojects@gmail.com

— In Partnership With —



SMART CITY
EXCELLENCE AT WORK